

Stage 2: Pembrey National Closed Road Circuit, 1.785km x 25 laps = 35.7km/22.18 miles

Stage Headquarters	Road Circuit Signing-On Area
Signing-On Opens	09:45
Signing-On Closes	10:30
Officials' Meeting	10:00 (Stage HQ)
Rider Briefing	10:50
Briefing Location	Race start/finish line
Presentation of Jerseys	10:55
Stage Rollout (neutral)	11:00
Length of Neutralised Zone	1.785km / 1.11 miles / 1 lap



Photo: Sam Watson conquers Pembrey ©2019 Dave Partridge

25 laps (plus one neutral) on an undulating circuit. Note: Stage runs **anticlockwise**. Do not ride in the opposite direction at any point before or after the stage.

Racing will commence as the peloton crosses the Start/Finish line at the completion of the neutralised lap.

Remember: Timing chips are in use on this stage – don't forget to put yours on – and take it off afterward!

Feed Zone: There is no feeding on this stage.

SAFETY NOTES:

- Be aware – especially if you have been dropped or lapped – that motos or riders may overtake you. Maintain situational awareness and move aside when you need to.

Race Convoy: There will be no cars on the circuit during the stage. Moto-commissaires will be in operation as necessary.

Rider Service: There is a pit lane located 150m **after** the start/finish line and a second pit area located at the 'cut through'. Riders who have a mechanical problem must make their way to the next pit. Team managers/service will need to position in one of the pit areas – they must remain at that area and provide neutral service to any riders that require it.

Laps out are **not** permitted. Riders will need to re-join the race immediately after taking service.

Lapped Riders: Riders are required to finish the race unless they are directed by the Commissaires to withdraw – **DO NOT STOP** if you are lapped. Lapped riders will be given a calculated finishing time so do not have to complete the full race distance. Stop when you are shown the chequered flag!

Time Limit: Riders are reminded of BC Technical Regulation R13.10 and the supplemental regulations described later in this manual. The time limit on every stage of the race is 20%. Riders who are dropped during the circuit race should be aware that they are at **significant risk of elimination** should they sit up.

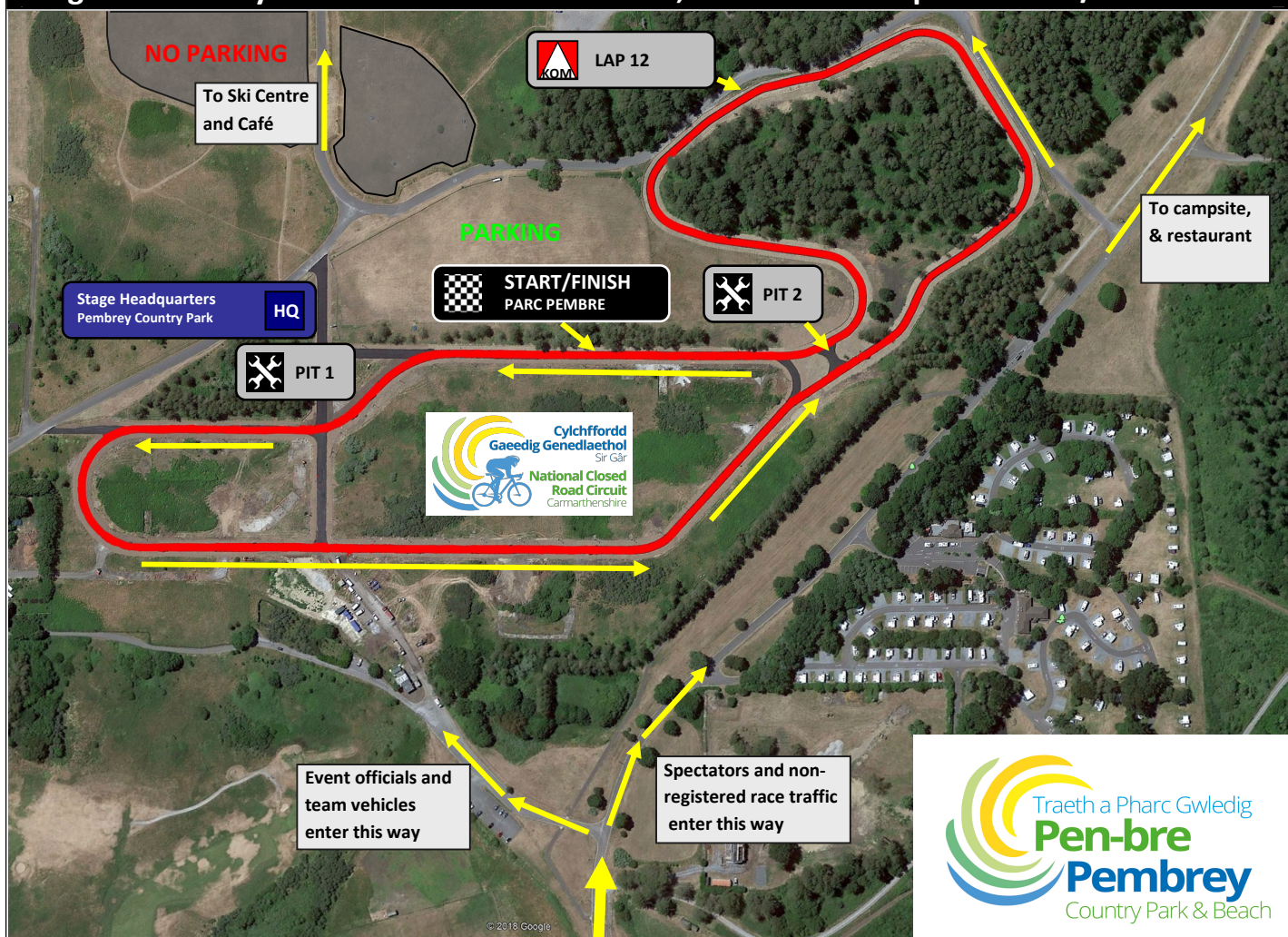
King of the Mountains and Sprint Competitions:

There is one KoM prime on this stage: At the summit of the climb midway through lap 12. It will be signified by a whistle the preceding lap. It is a 2nd category climb (4,3,2,1 points)

There are three hotspot sprints: End of lap 9 (2nd Category), end of lap 18 (2nd) and end of lap 25 (Finish, 1st Cat)

There are no **Time Bonuses** on stage 2

Stage 2: Pembrey National Closed Road Circuit, 1.785km x 25 laps = 35.7km/22.18 miles



Entry and Exit Details – Pembrey Country Park

There is a charge payable for motor vehicles using the park - £3.00 for two hours and £5.00 all day. Vehicles belonging to race officials, and teamcars will be able to enter/exit the park without charge provided your registration number is on the access list. This will enable entry to the circuit through its dedicated gate. Please follow race officials' instructions when parking as there are other events on in the fields adjacent to the circuit with their own parking spaces. Do ***not*** park in the grey shaded fields in the picture above.

Spectators and other race traffic will need to enter the park through the main entrance – and then pay for parking at the pay points either in the restaurant near the campsite, or the Ski Centre. Once through the entry barriers, take the first left turn and follow the road round to the circuit.

We are awaiting confirmation whether the showering facilities in the campsite will be available to riders between stages 2 and 3. The campsite is an approximate 1km walk – or 3 minute gentle ride – re-download this manual for the latest info or check at stage 1/2 signing-on for the details here.

If you have time to relax between stages 2 and 3, make sure you explore the park (wear a face covering in any indoor spaces!). There are a range of snacks and drinks available in the Ski Centre, while the restaurant over by the campsite will be serving hot meals. For further info – www.pembreycountrypark.wales

The circuit and park have a strict no-litter policy. Please do not drop litter around your cars/rollers/anywhere else round the park – and retain gel wrappers etc in your pockets until after the race. Do ***not*** discard around the circuit. Please ***do*** remain aware of the relevant virus mitigations.